

Bizhub C253

From Knowledge Base



This printer is in Portsmouth

Contents

- 1 Intro
- 2 Usage
- 3 Getting Drivers
 - 3.1 Mac OSX 10.6 Snow Leopard
 - 3.2 Windows XP
- 4 Servicing
- 5 Supplies
- 6 Configuration
- 7 Administration and Management
- 8 References

Intro

Model

bizhubC253 (<http://kmbs.konicaminolta.us/content/products/models/bizhubC253.html>)

Serial Number

Drivers

<http://onyxftp.mykonicaminolta.com/download/SearchResults.aspx?productid=1021>

Specs

http://www.biz.konicaminolta.com/colour/c353_c253_c203/spec.html

Usage

The printer is setup on the local network. Users should configure their computer to access the network wirelessly, or using an available Ethernet connection. The proper driver for the operating system needs to be installed, and the printer can be found at 192.168.5.17

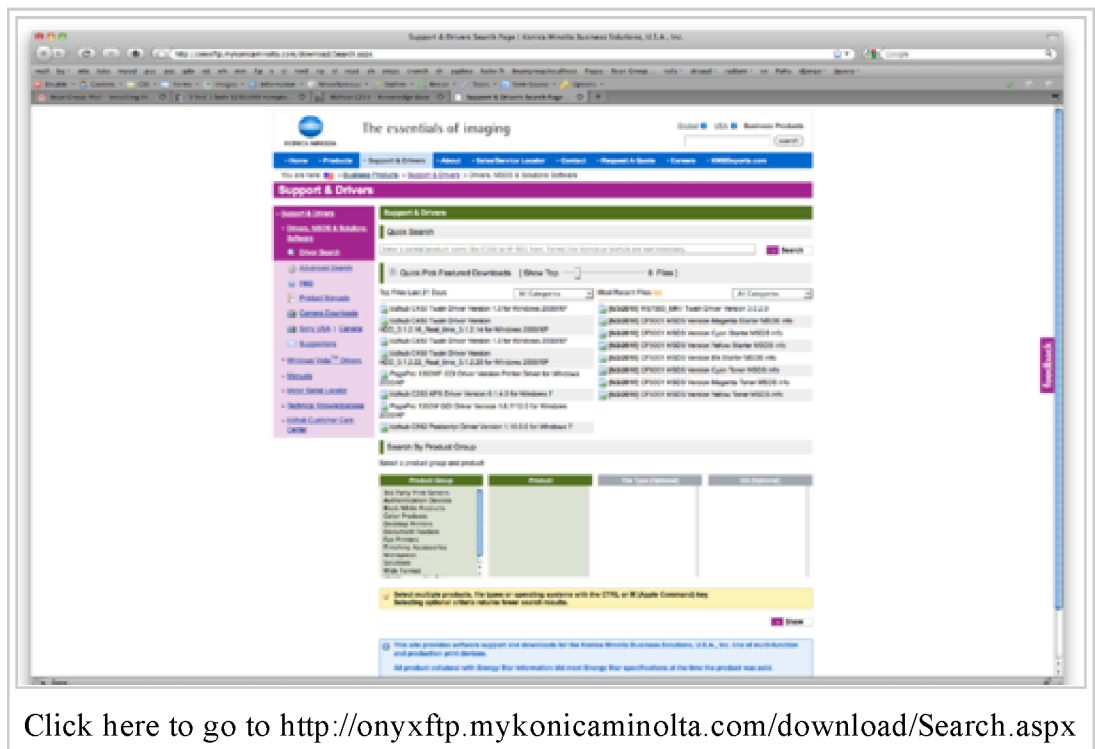
Getting Drivers

- Generally speaking we use the **Postscript** drivers instead of the PCL drivers.
- Once you get the driver, you need to install it, and also configure the user accounting.

Mac OSX 10.6 Snow Leopard

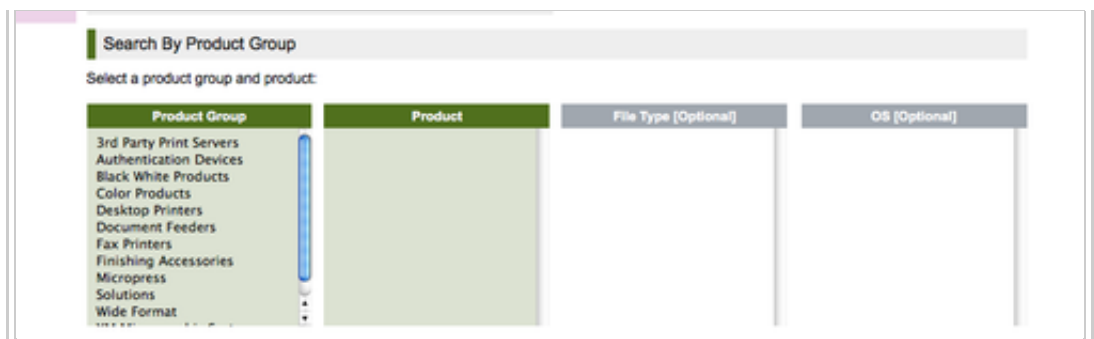
Click any image to see the full-size screenshot (Ctrl+click to open in a new tab)

1. Click here to go to <http://onyxftp.mykonicaminolta.com/download/Search.aspx>



Click here to go to <http://onyxftp.mykonicaminolta.com/download/Search.aspx>

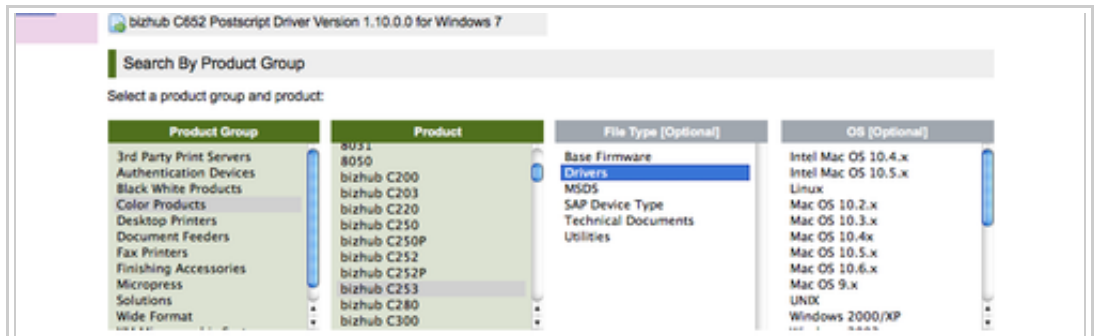
2. under "**Product Group**", click **Color Products**



under "**Product Group**", click **Color Products**

3. under "**Product**" scroll to and click **bizhub C253**

4. under "**File Type**" click on **Drivers**



under "**File Type**" click on **Drivers**

5. under "**OS**" click on the appropriate Operating System (e.g. Mac OS 10.6.x for Snow Leopard)

6. click the **Show** button

7. click on the link (<http://onyxftp.mykonicaminolta.com/DownloadFile/Download.ashx?fileid=19102&productid=1021>) to download the driver installer

(KONICAMINOLTA_C353Series_106.pkg).

(<http://onyxftp.mykonicaminolta.com/DownloadFile/Download.ashx?fileid=19102&productid=1021>) In

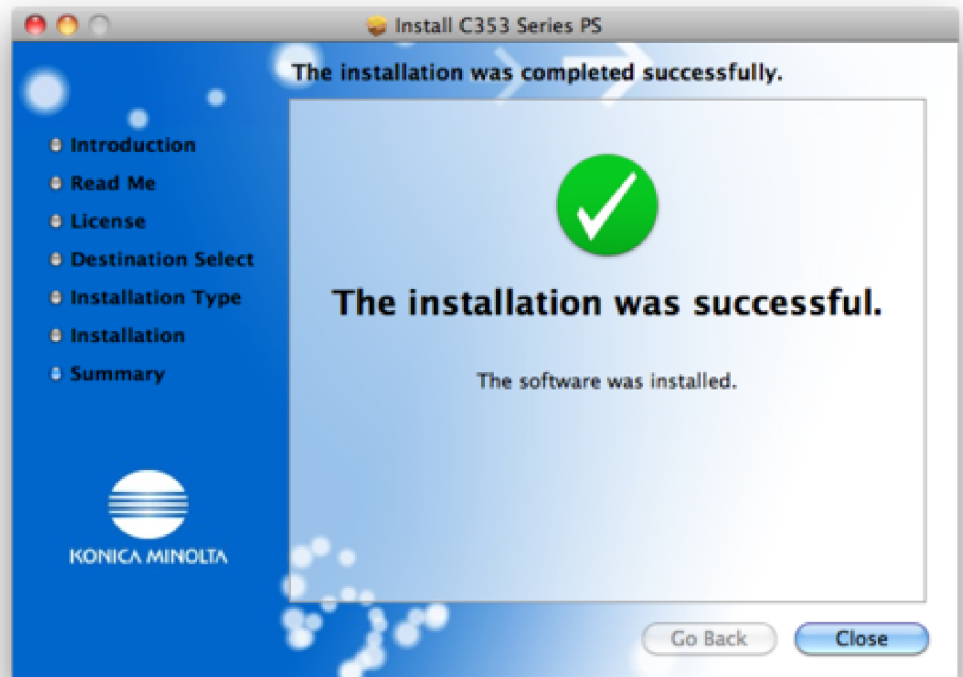
Mac, this will end up in the "Downloads" folder.

8. open finder and navigate to "Downloads", click the zip file and it will autounzip

9. click the pkg file, and it will launch the installer wizard ^[1]

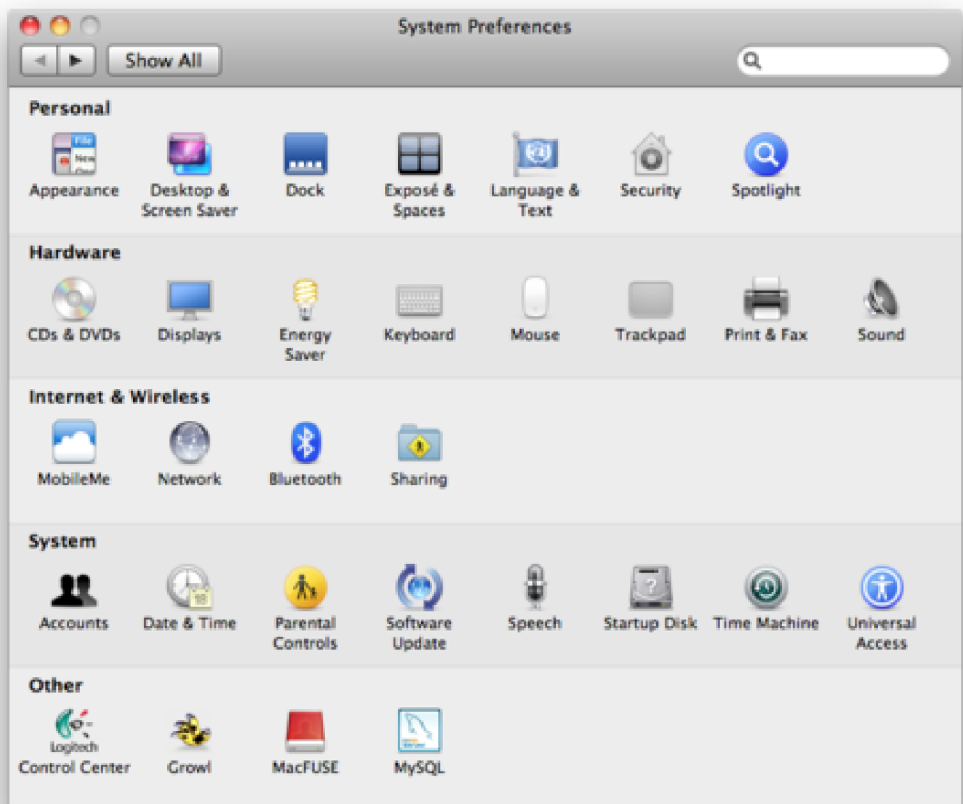
10. accept all the prompts, (NB: you may need to enter your System user password to authorize installation of the driver)

11. you will see the "success" screen upon completing the driver installation



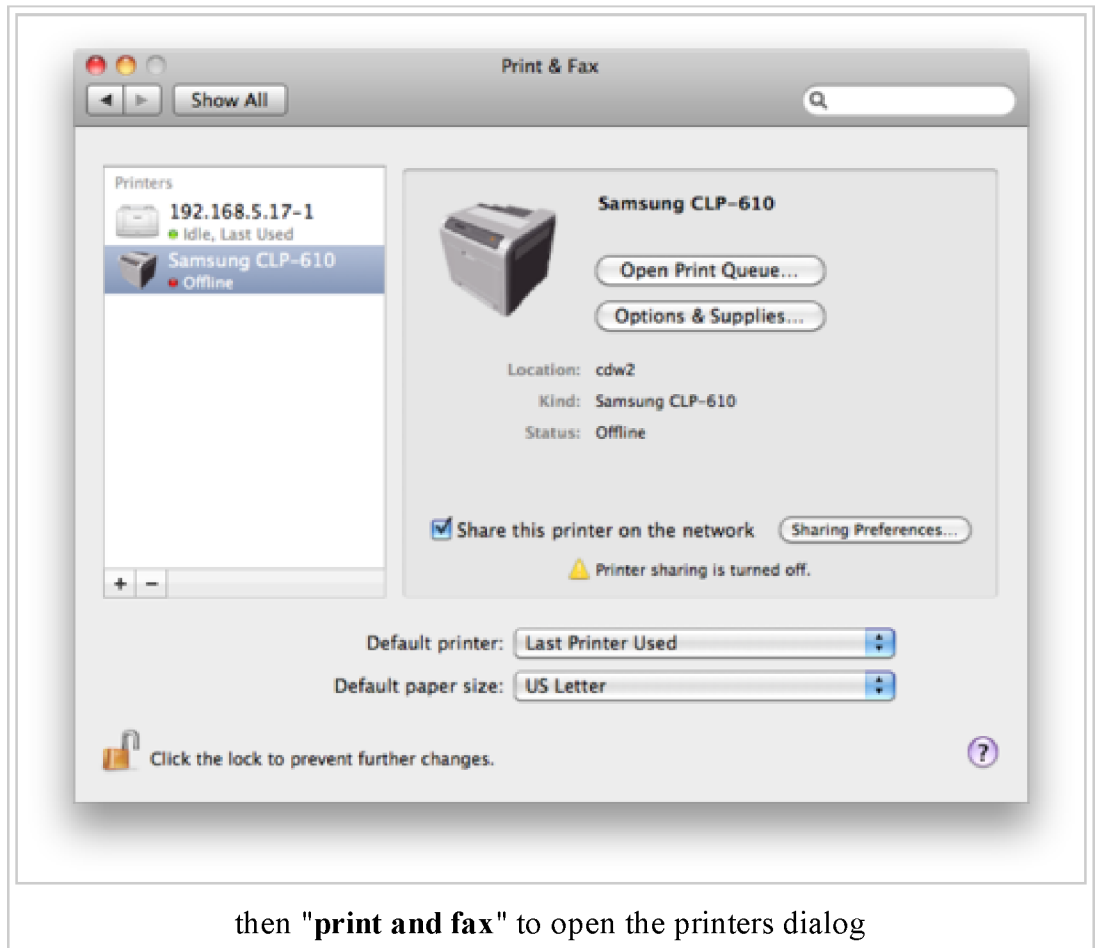
you will see the "success" screen upon completing the driver installation

12. click on the apple menu icon (top left) and "**system preferences**"



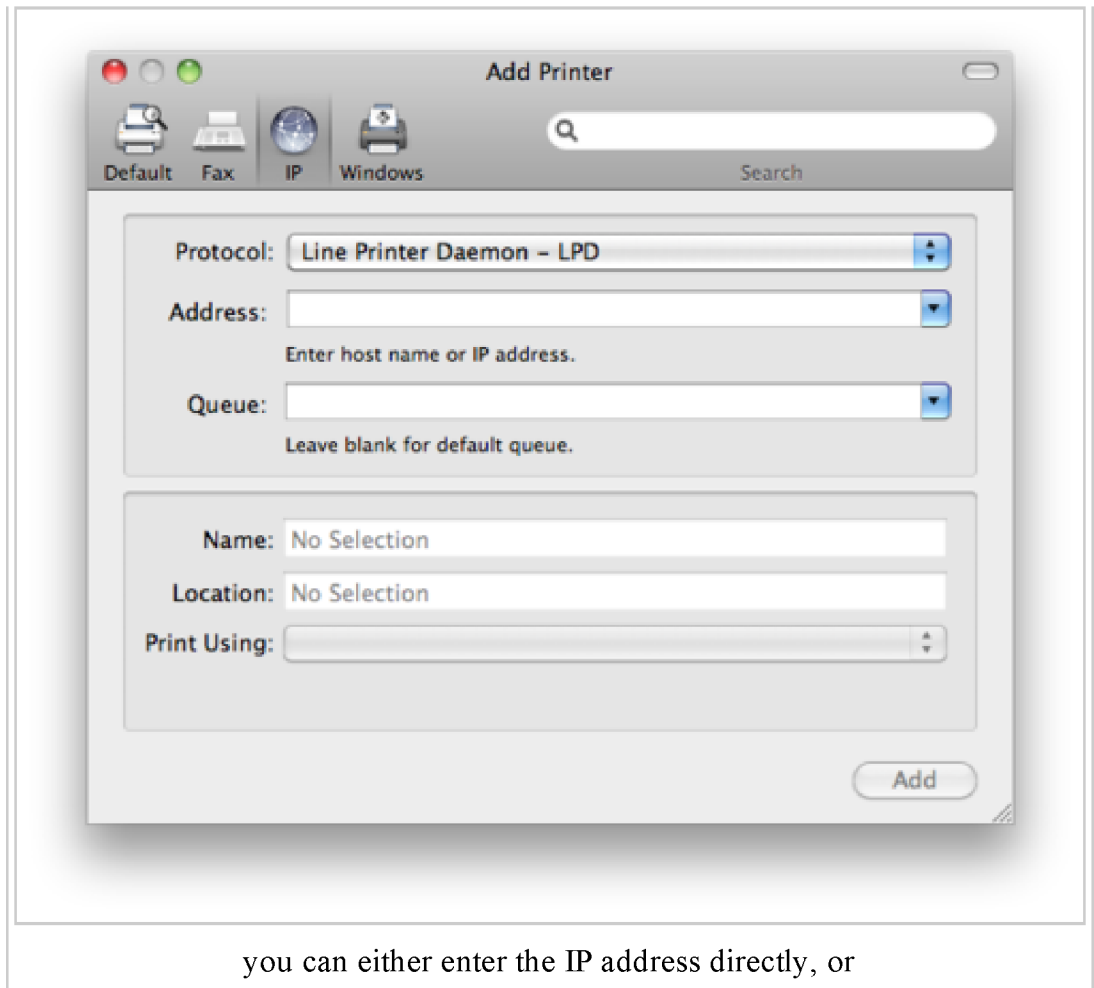
click on the apple menu icon (top left) and "**system preferences**"

13. then "**print and fax**" to open the printers dialog



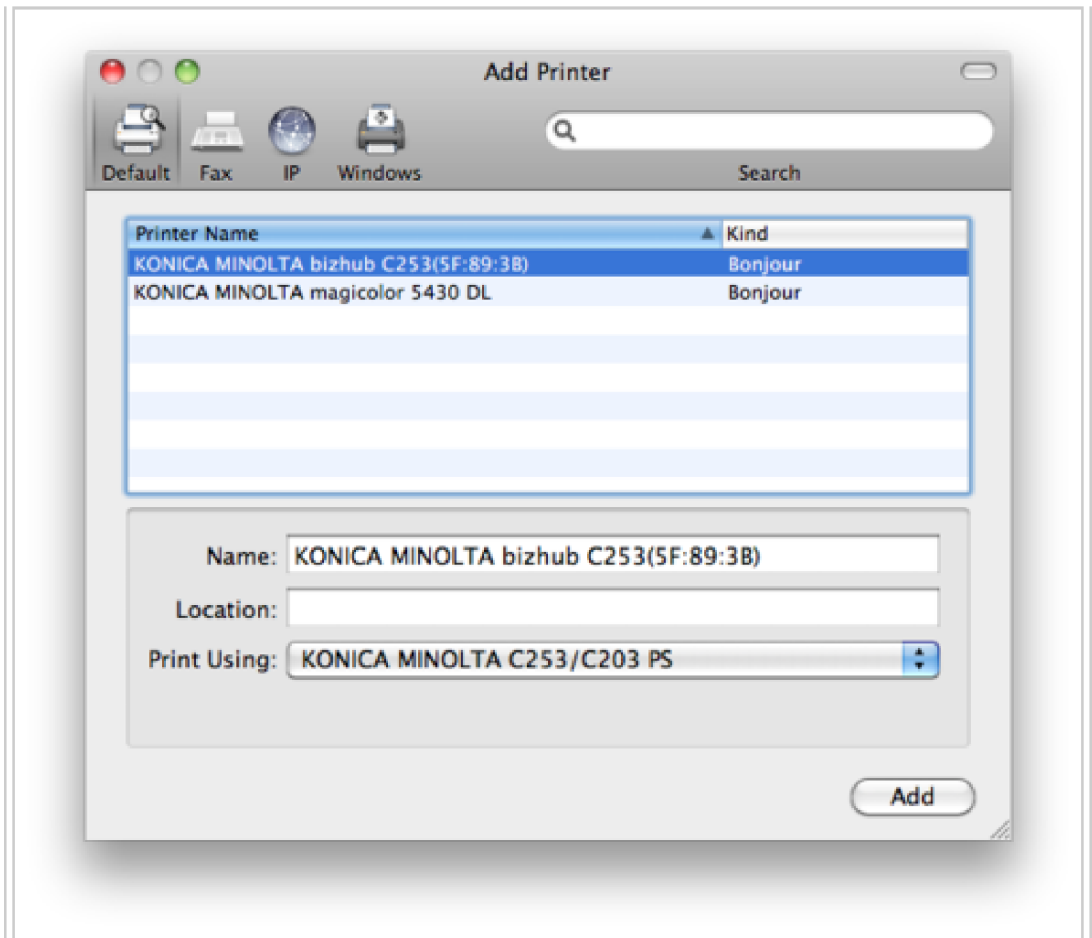
14. click the + icon to add a new printer

15. you can either enter the IP address directly, or



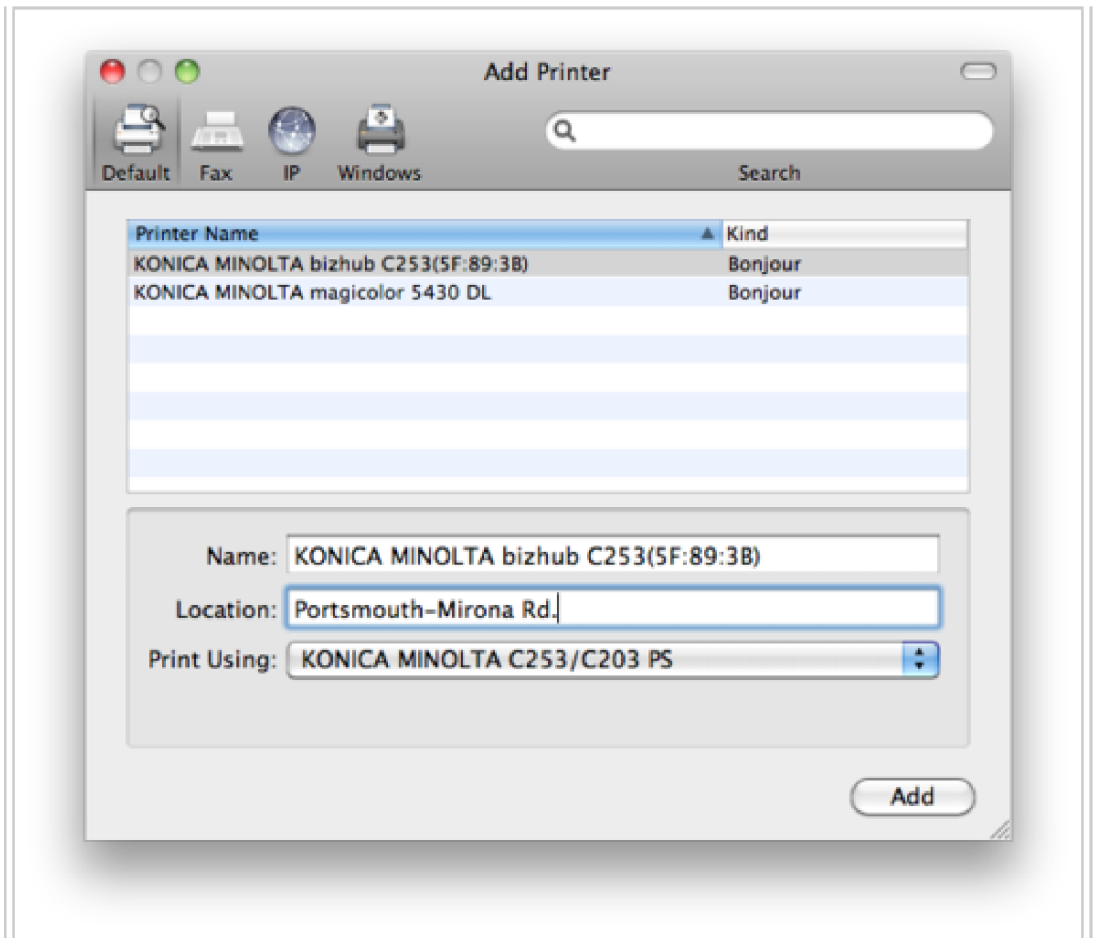
you can either enter the IP address directly, or

16. it's easiest to just click on the "Default" icon, which will automatically find and show the printer (using Apple's 'Bonjour' protocol)



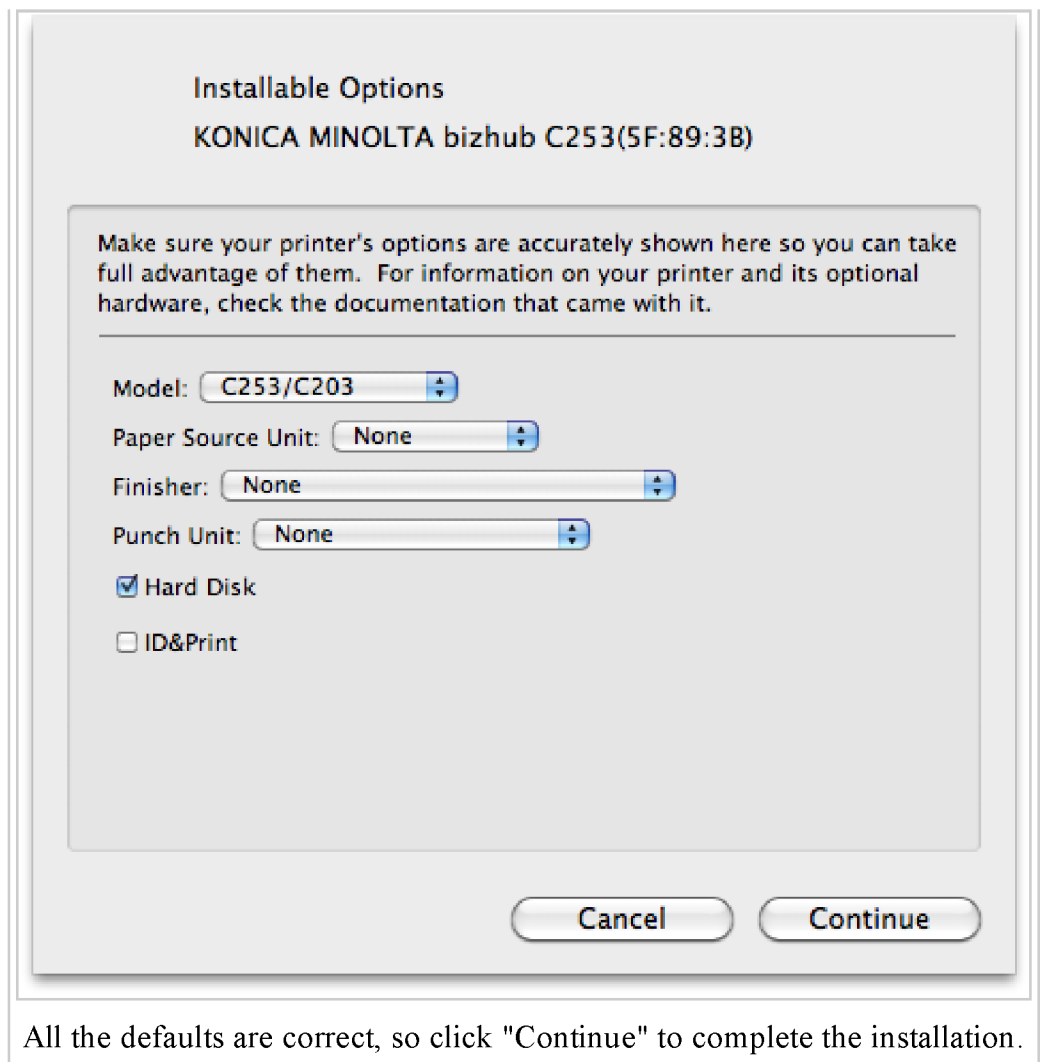
it's easiest to just click on the "Default" icon, which will automatically find and show the printer (using Apple's 'Bonjour' protocol)

17. Select the printer you want
 18. Optionally add a description (such as **Bean Group - Portsmouth**) to the "Location" field and click "Add"
-



Optionally add a description (such as **Bean Group - Portsmouth**) to the "Location" field and click "Add"

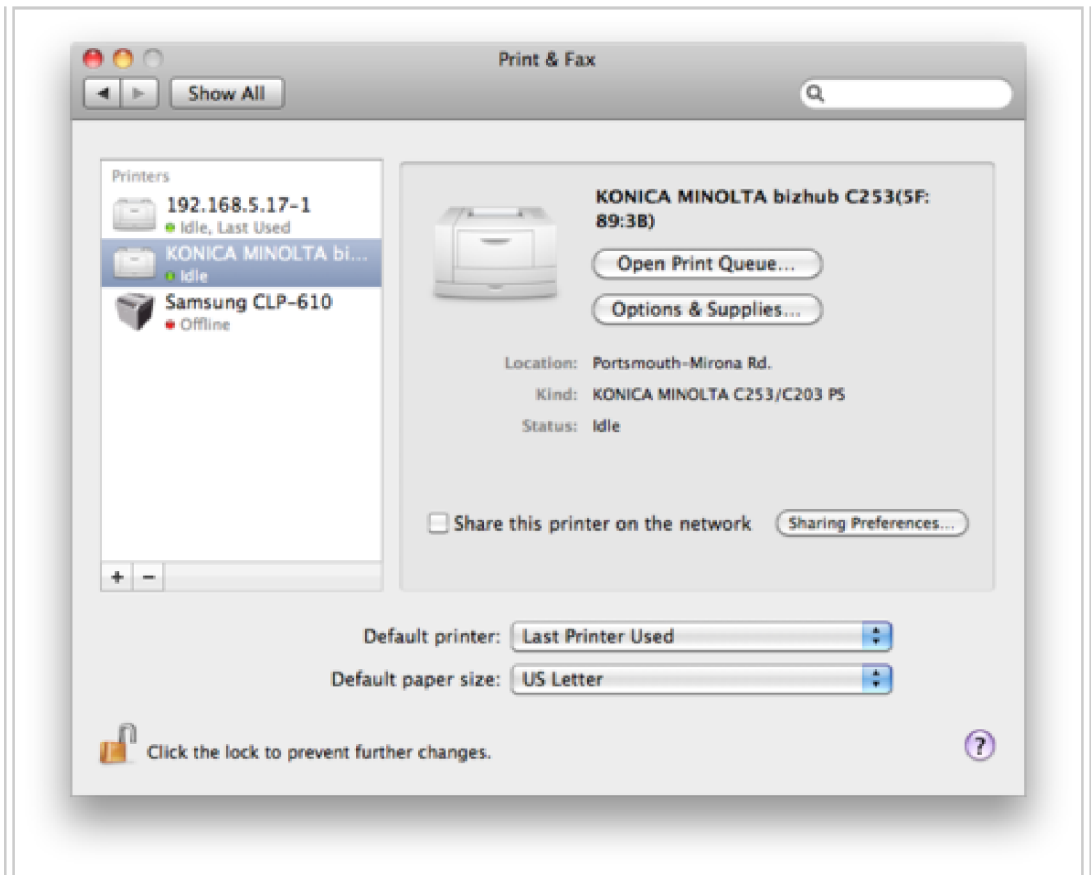
19. All the defaults are correct, so click "Continue" to complete the installation.



All the defaults are correct, so click "Continue" to complete the installation.

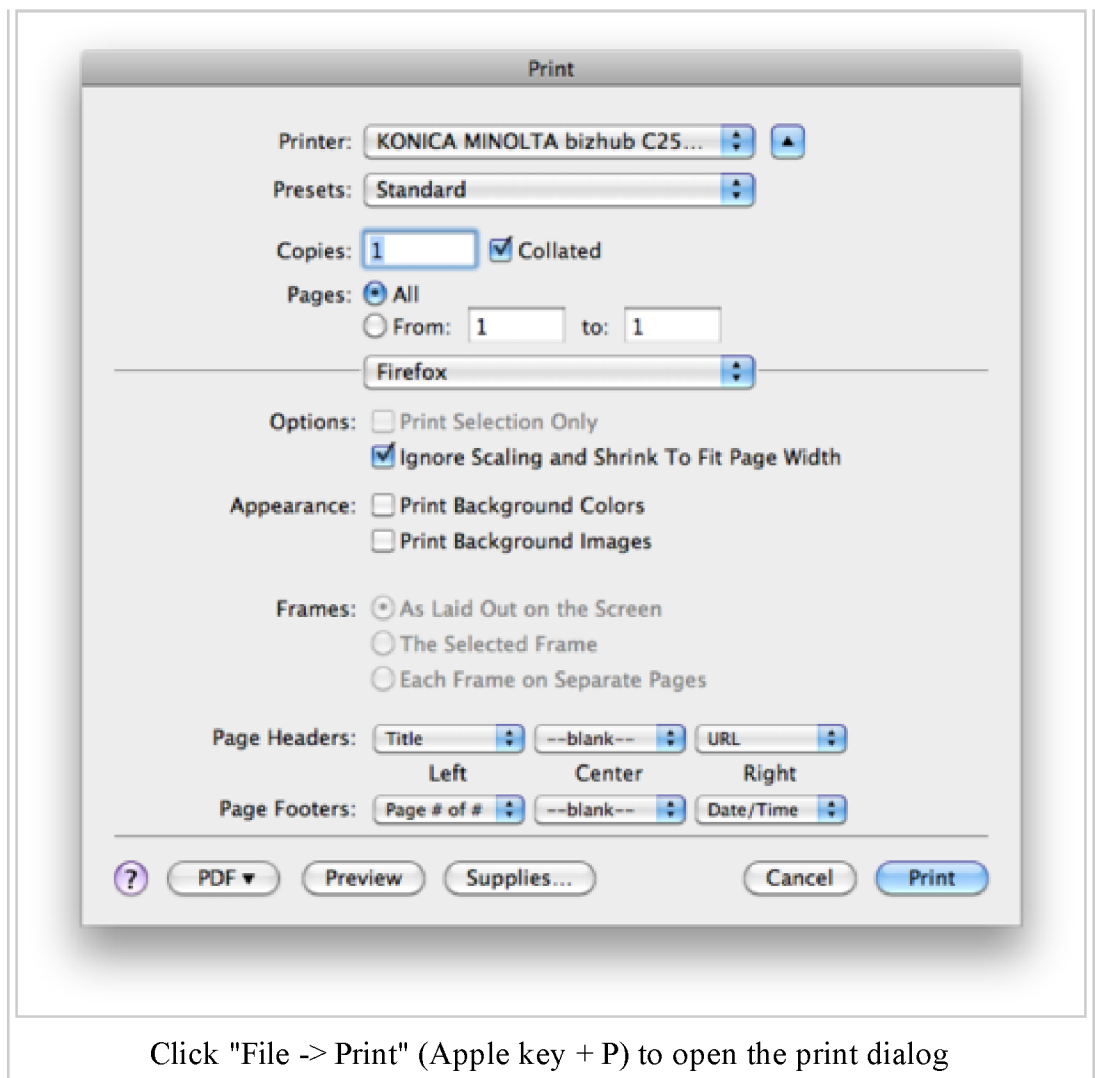
20. You can close the **Print & Fax** dialog, because the actual driver configuration is done from the Print dialog of an application

of an application.



You can close the **Print & Fax** dialog, because the actual driver configuration is done from the Print dialog of an application.

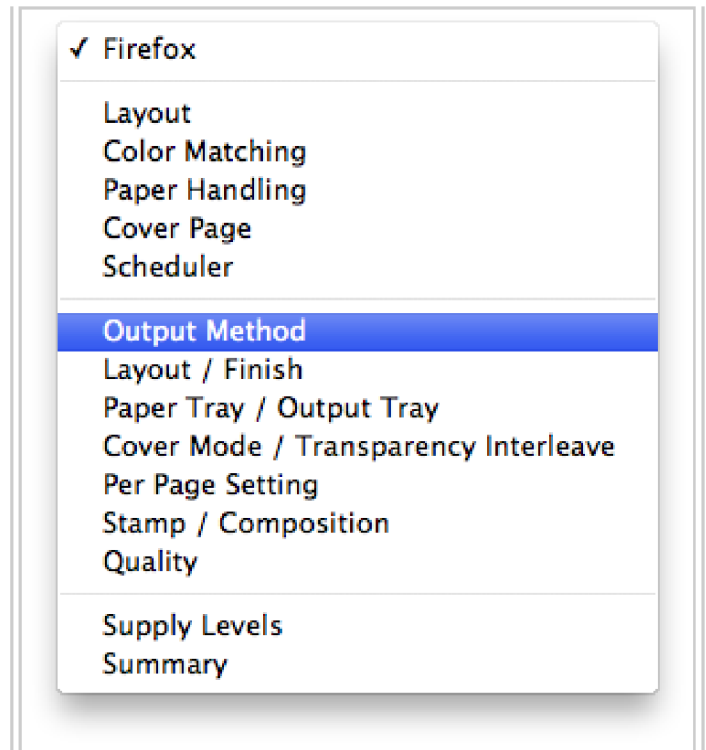
21. Launch Mozilla Firefox
 22. Click "File -> Print" (Apple key + P) to open the print dialog
-



Click "File -> Print" (Apple key + P) to open the print dialog

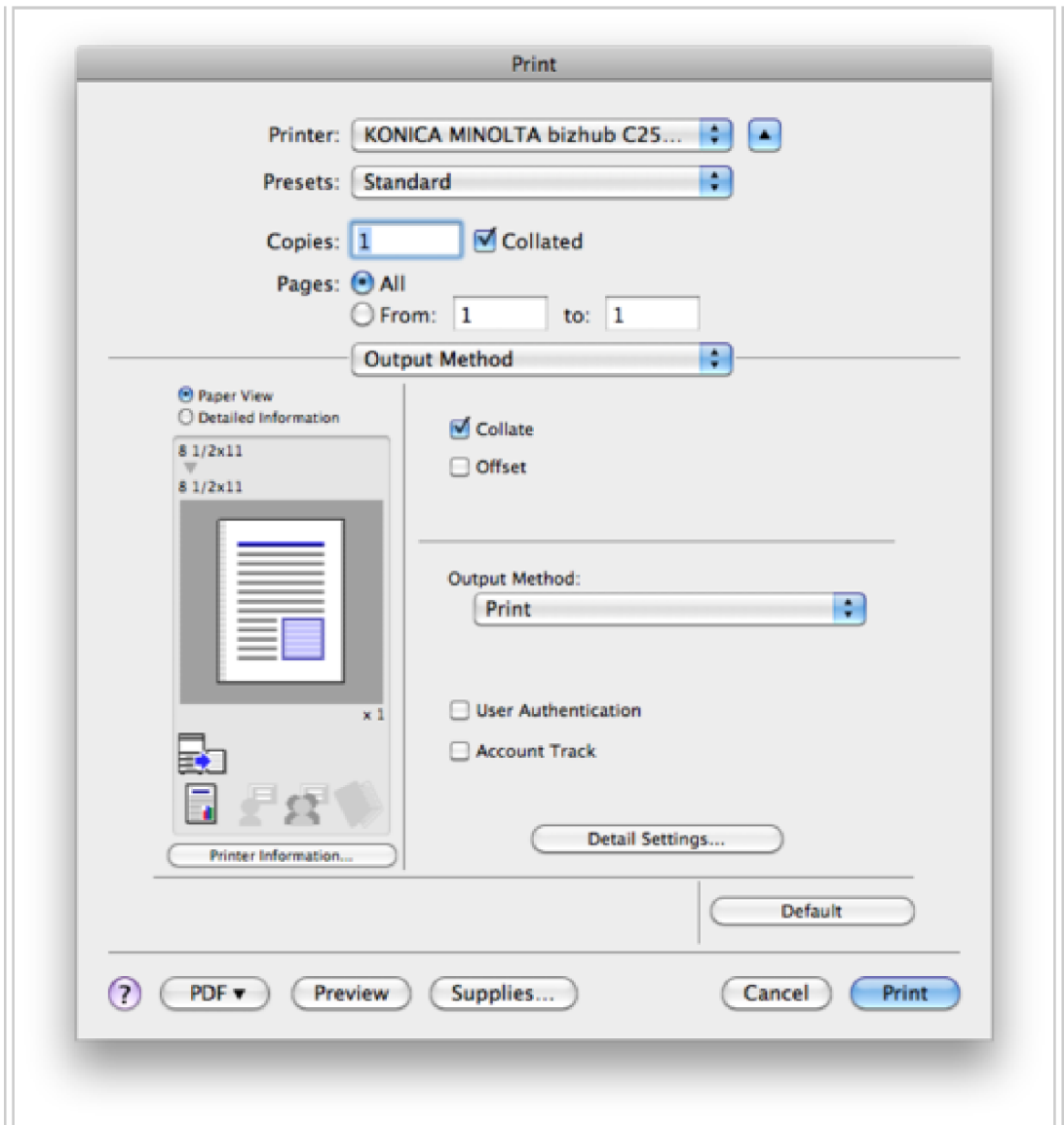
23. Note: You may need to click the larger blue triangle to expand the dialog if the extended print dialog (illustrated here) is not shown.
24. Where it says Firefox, Choose **Output Method**

24. Where it says Firefox, Choose **Output Method**



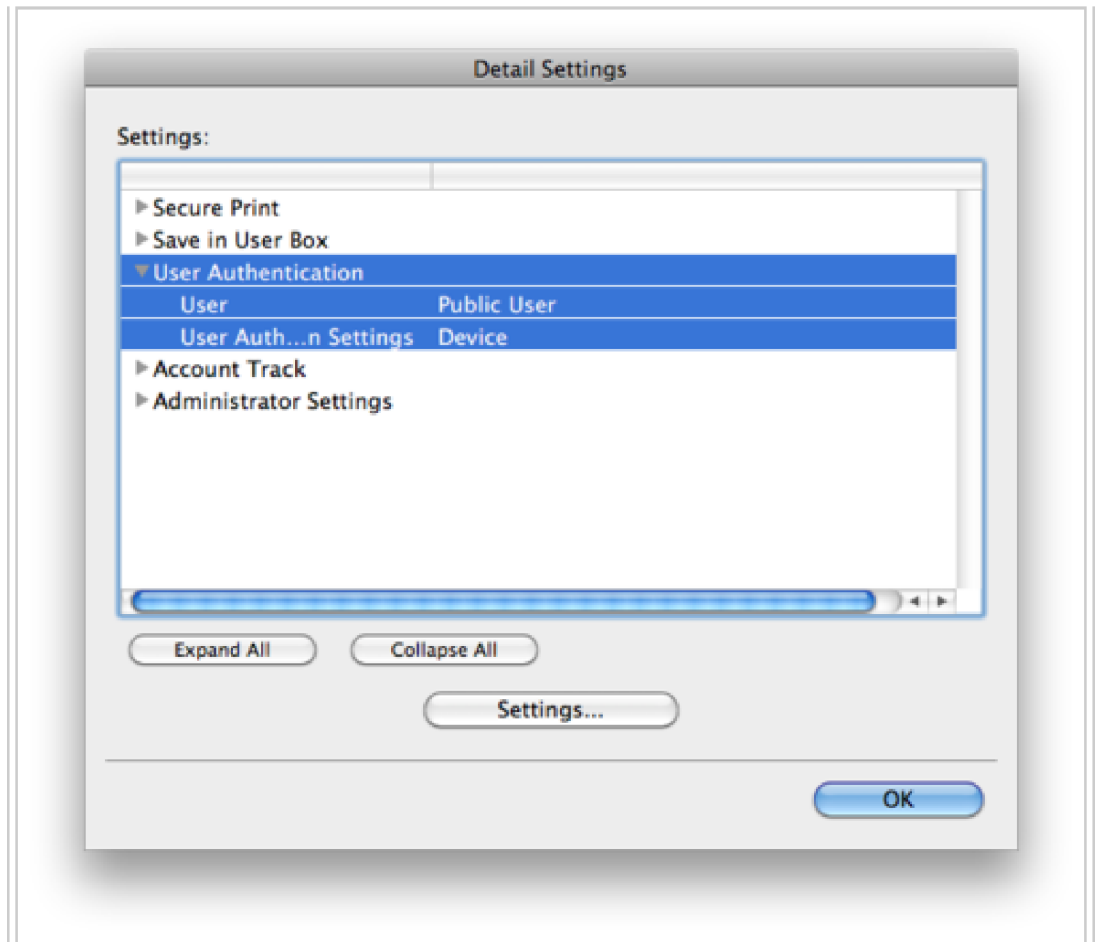
Where it says Firefox, Choose **Output Method**

25. Click on the checkbox for "User Authentication" and then click the button for Detail Settings.



Click on the checkbox for "User Authentication" and then click the button for Detail Settings.

26. Click to expand the User Authentication area, and highlight "User Authentication" by clicking on it, click **Settings**



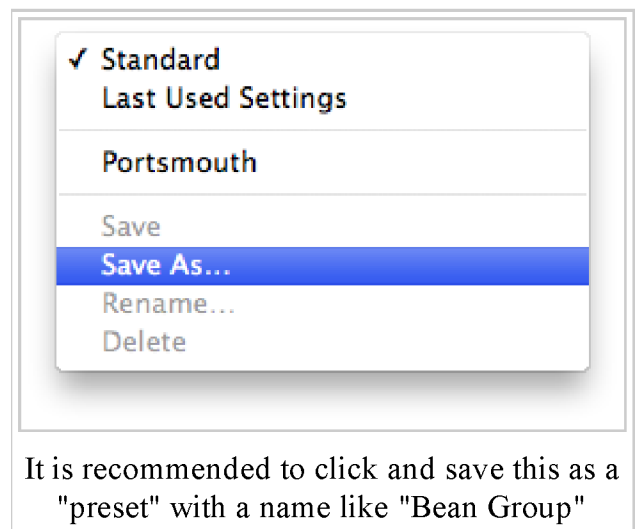
Click to expand the User Authentication area, and highlight "User Authentication" by clicking on it, click **Settings**

27. There you can enter your username and password. Be sure to use "recipient user". Check "Save Settings" and "Do not show this window when setting"; Click **OK** and you should be done.
-



There you can enter your username and password. Be sure to use "recipient user". Check "Save Settings" and "Do not show this window when setting"; Click **OK** and you should be done.

28. It is recommended to click and save this as a "preset" with a name like "Bean Group"



It is recommended to click and save this as a "preset" with a name like "Bean Group"

Windows XP

There are several choices, using the **Version 6.3.1.BT21_01**
(<http://onyxftp.mykonicaminolta.com/DownloadFile/Download.ashx?fileid=15989&productid=1021>)